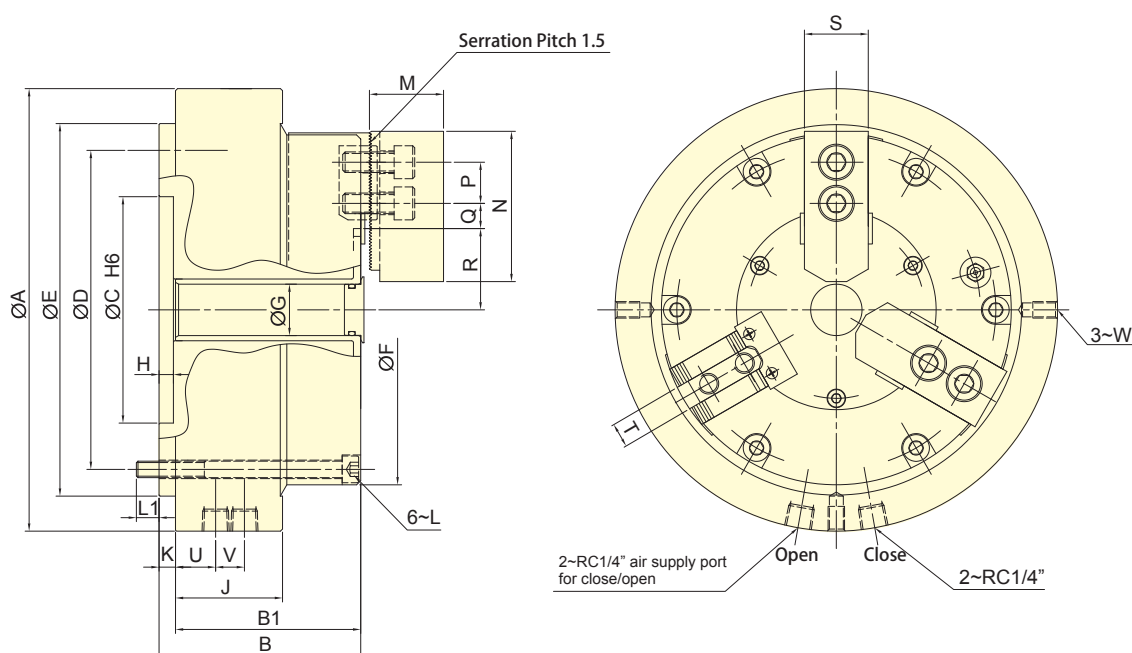




- Rotary chuck with built-in pneumatic cylinder, compact design, suitable for light machining, compatible to standard soft jaw/hard jaw.
 - Can be installed on a rotary table for indexing machining.
 - Sealed against dust and cutting chips.
 - Matching surfaces of all parts hardened, ground and lubricated directly.
- Note: To overcome friction force between distributor ring and chuck body, the rotating torque of rotary table must be higher than the requirement shown in the table.



Subject to technical changes

SPECIFICATIONS

Model	Jaw stroke (Dia.)	Chucking Dia. Max.	Chucking Dia. Min.	Max. clamping force Pneumatic(at 6.0kgf/cm ²)	Max. pressure (kgf/cm ²)	Max. speed (r.p.m.)	Max Rotation resistance torque (Nm)	Air consumption (at 6.0 kgf/cm ²) lit (kgf/cm ²)	Weight (kg)
	mm								
RAP-306	5.5	170	25	21.0(2141.4)	7	72	40	3.1	16.2
RAP-308	6.8	215	37	34.2(3487.4)	7	60	60	3.1	30.6
RAP-310	7	254	53	48.0(4894.7)	7	53	85	4.2	42.4

DIMENSIONS

Model	A	B	B1	C (H6)	D	E	F	G	H	J	K
RAP-306	215	98	90	110	155	181	170	25	7	52	8
RAP-308	260	113	104	110	200	226	215	32	8	52	9
RAP-310	300	117	52	140	235	261	254	54	8	52	10

Model	L	L1	M	N	P	Q max.	Q min.	R max.	R min.	S	T	U	V	W
RAP-306	6~M8	11	36	73	20	10.75	6.25	47	44.25	31	12	19.5	14	3~M8
RAP-308	6~M8	16	37	95	25	13.25	8.75	57	53.6	35	14	19.5	14	3~M8
RAP-310	6~M8	14	42	110	30	23.25	12.75	64.5	61	40	16	19.5	14	3~M8