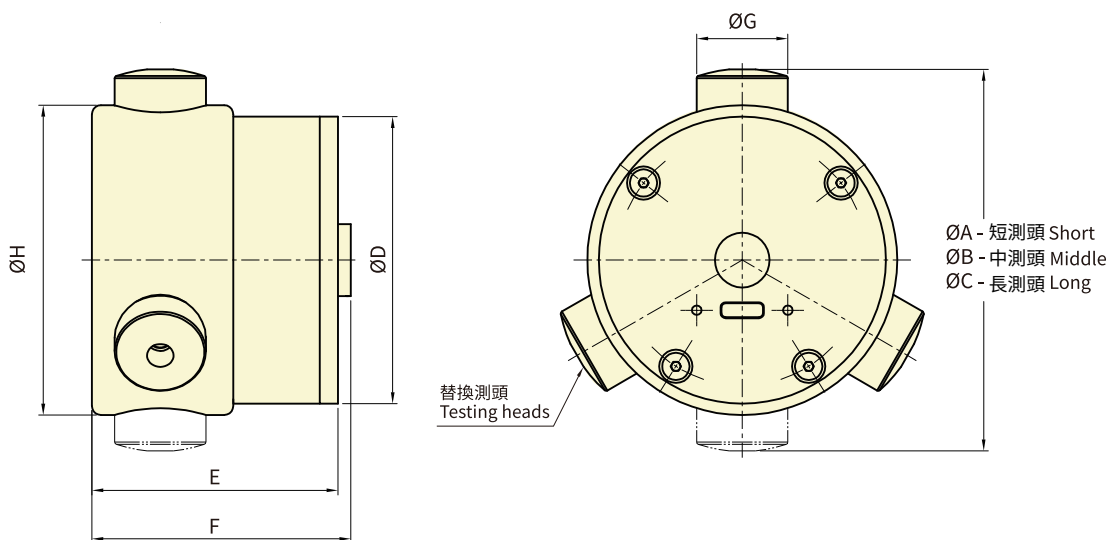




- 藍牙 5.0 傳輸穩定：擁有最新的藍牙 5.0 技術，確保無線連接的穩定性。
- Type-C 充電便利：支援 Type-C 充電，讓充電更加便捷。
- 高性能鋰電池：提供更長的續航時間，讓您在工作中無需擔心電量問題。
- 支援 Android 和 iOS：無論您使用的是 Android 還是 iOS 系統，GFS-100 都能夠完美兼容，讓您無縫體驗。
- 可配置 2 爪或 3 爪操作：根據您的實際需求，GFS-100 可以輕鬆配置為 2 爪或 3 爪操作，提供更大的彈性。
- 注意：第一代夾持力感測器 (GFS-100) 和第二代的夾持力感測器 (GFS-100)APP 不能共用。
- iOS 系統：Apple iOS 16.1.2 版本以上。Android 系統：Android 12 版本或以上。
- Stable Bluetooth 5.0 Transmission: Equipped with the latest Bluetooth 5.0 technology, ensuring stability in wireless connections.
- Convenient Type-C Charging: Supports Type-C charging for added convenience in recharging.
- High-Performance Lithium Battery: Provides a longer-lasting battery life, eliminating concerns about power during work.
- Supports Android and iOS: Whether you use Android or iOS systems, the GFS-100 is perfectly compatible, offering a seamless experience.
- Configurable for 2-Jaw or 3-Jaw Operation: Based on your specific needs, the GFS-100 can easily be configured for either 2-jaw or 3-jaw operation, providing greater flexibility.
- Note: The first-generation gripping force sensor (GFS-100) and the second-generation gripping force sensor (GFS-100) APP are not compatible and cannot be used interchangeably.
- iOS System: Apple iOS 16.1.2. Android System: Android version 12.



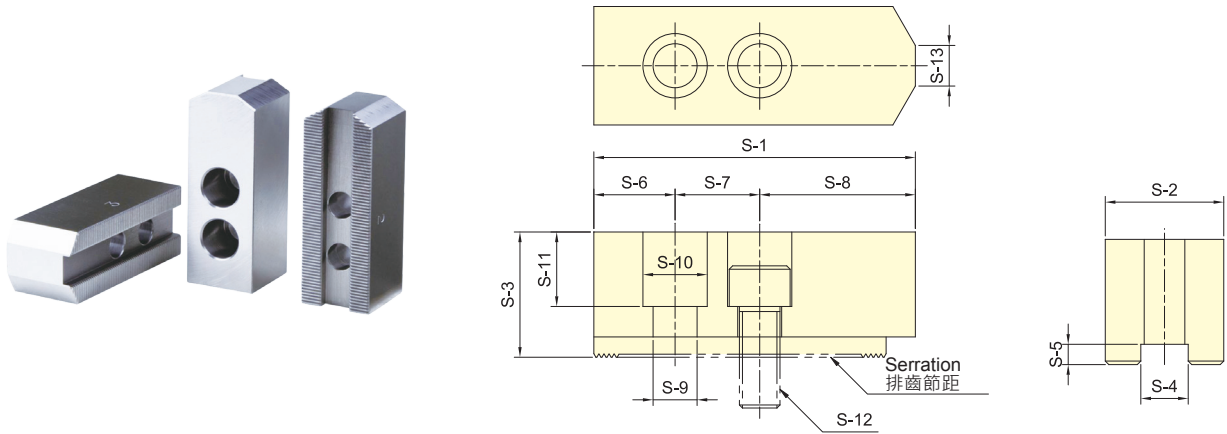
保留規格修改的權利 Subject to technical changes

技術規格 SPECIFICATIONS

型號	最大夾持力(單爪)	最高轉速	夾持範圍	準確度
Model	Max. Load (1-jaw)	Max. Speed	Gripping range	Accuracy
	(kN)	(r.p.m.)	(mm)	
GFS-100	100	6000	70, 84, 104	± 2%

外型尺寸 DIMENSIONS

Model	A	B	C	D	E	F	G	H
GFS-100	70	84	104	63	54	57	20	68



外型尺寸 DIMENSIONS

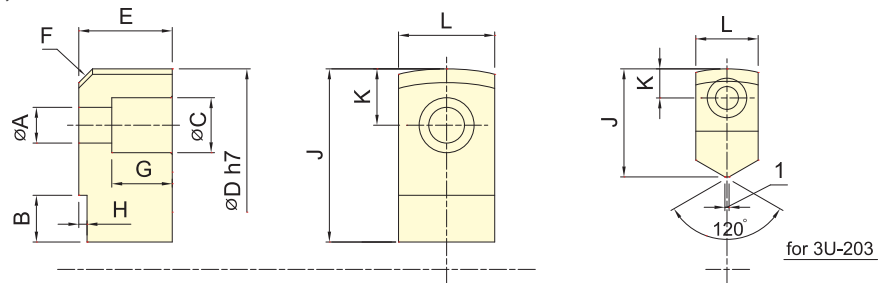
保留規格修改的權利 Subject to technical changes

型號	S-1	S-2	S-3	S-4	S-5	S-6	S-7	S-8	S-9	S-10	S-11	S-12	S-13	排齒節距	適用夾頭	三爪重量
MODEL	S-1	S-2	S-3	S-4	S-5	S-6	S-7	S-8	S-9	S-10	S-11	S-12	S-13	Serration Pitch	Matching Chuck	3 Jaw Weight
SJ-04	52	23	23	10	5	10	14	28	9	14	13	M8	3	1.5×60°	3H-204, 3P-04	0.5
SJ-05	62	25	30	10	5	10	14	38	9	14	20	M8	3.5	1.5×60°	3H-205, 3L-205, 3P-05, 3M-05	0.8
SJ-06	73	31	36	12	5	15	20	38	11	17	24	M10	14	1.5×60°	3H-206, 3L-206, 3P-06, 3M-06	1.5
SJ-08	95	35	37	14	5	24	25	46	13	19	22	M12	16	1.5×60°	3H-208, 3L-208, 3P-08, 3M-08	2.4
SJ-10	110	40	42	16	5	30	30	50	13	19	27	M12	18	1.5×60°	3H-210, 3L-210, 3P-10, 3M-10	3.7
*SJ-12H	130	50	50	21	5	40	30	60	17	25	30	M16	23	1.5×60°	3H-12, 3H-212, 3L-212, 3V-12, 3P-12, 3M-12	6.3
SJ-12P	130	50	50	18	5	40	30	60	16	23	30	M14	23	1.5×60°	3H-12, 3H-212, 3L-212, 3V-12, 3P-12, 3M-12	6.5
SJ-15H	165	62	62	22	8	37	43	85	21	32	37	M20	-	1.5×60°	3H-15, 3H-215, 3H-18, 3L-15, 3P-215, 3P-218, 3V-15, 3V-18	12.6
*SJ-15P	165	62	62	25.5	6	37	43	85	21	32	37	M20	-	1.5×60°	3H-15, 3H-215, 3H-18, 3L-15, 3P-215, 3P-218, 3V-15, 3V-18	12.5
SJ-21	180	64	70	25	9	40	60	80	21	32	45	M20	-	3.0×60°	3H-221, 3H-224, 3H-232, 3P-221, 3P-224, 3V-21, 3V-24, 3V-32	15.8

* SJ-12H 為 12" 夾頭出廠配備。(12"Chucks are originally equipped with SJ-12H.)

* SJ-15P 為 15" 夾頭出廠配備。(15"Chucks are originally equipped with SJ-15P.)

3U 夾頭之標準生爪 STANDARD SOFT JAW FOR 3U CHUCK

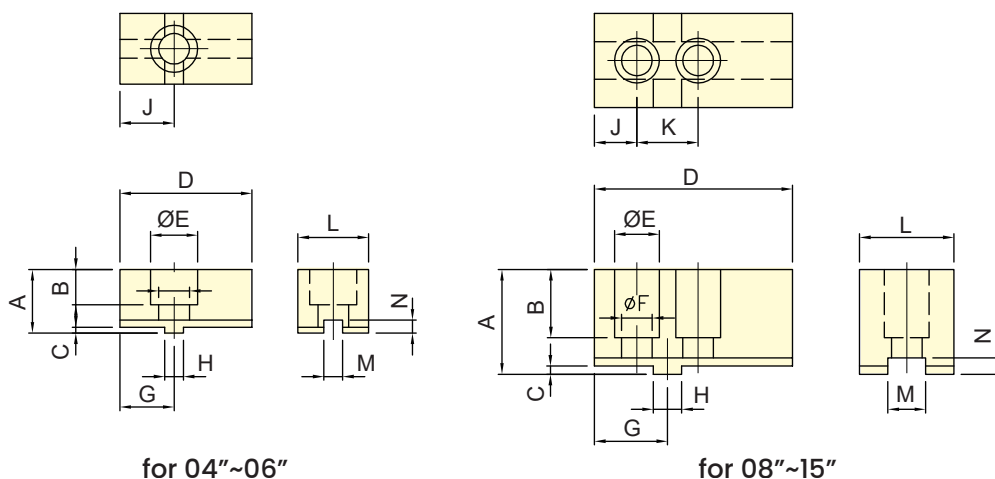


外型尺寸 DIMENSIONS

保留規格修改的權利 Subject to technical changes

型號	A	B	C	D	E	F	G	H	J	K	L
MODEL	A	B	C	D	E	F	G	H	J	K	L
3U-203	5.5	11	9.5	66	12	C3	7	3	26	7	15
3U-204	6.6	11	11	84	17	C4	11	3	32	9.5	20
3U-205	9	13.5	14	108	20	C4	12	3	41.5	13	24
3U-206	11	15	17	129	30	C6	20	3	50	17	30
3U-208	13	17	20	156	34	C6	22	3	63	20.5	35
3U-210	15	20	22	187	39	C6	24	4	74	23	40
3U-212	15	18	22	234	44	C6	29	4	72	23	40

2D/3D 夾頭之標準生爪 Standard Soft Jaw for 2D/3D chuck

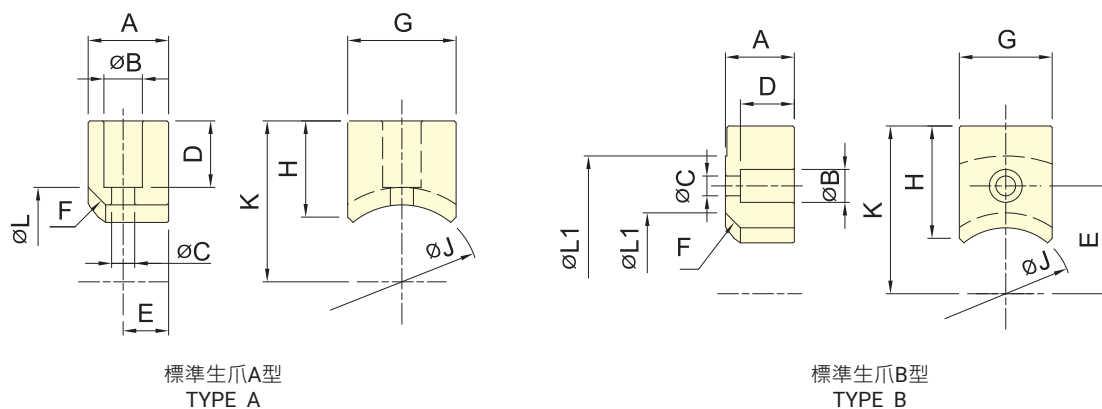


保留規格修改的權利
Subject to technical changes

外型尺寸 DIMENSIONS

型號 MODEL	A	B	C	D	E	F	G	H	J	K	L	M	N
3D-04	22	13	2.5	52	17.5	11	19	8	19	-	25	8	5.5
3D-05	27	15	2.5	56	20	13	23	8	23	-	30	8	5.5
3D-06	34	21	3	70	23	15.5	27	10	27	-	35	10	6
3D-08	44.5	29	3.5	84	19	13	31	12	18	26	40	16	7
3D-10	49.5	32	3.5	100	22	15	38	15	22	32	50	18	7
3D-12	54.5	36	3.5	120	26	18	42	17	24	36	60	20	7
3D-15	65	40	5	165	26	18	60	20	40	40	70	24	10

3E 夾頭之標準生爪 Standard Soft Jaw for 3E chuck

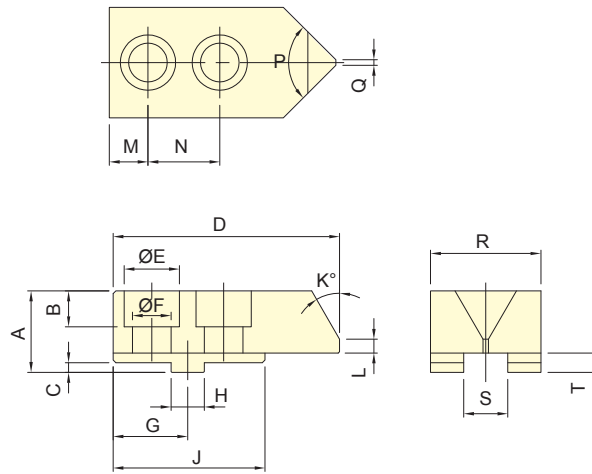


保留規格修改的權利
Subject to technical changes

外型尺寸 DIMENSIONS

型號 MODEL	A	B	C	D	E	F	G	H	J	K	L	L1	
3E-05	A 型	20	11	6.6	16.5	10	C5	25	22	29	34.5	39	-
	B 型	20	11	6.6	15	25.5	C5	25	30	29	42.5	39	69
3E-06	A 型	23	11	7	19	13	C5	31	27.5	44	46	54	-
	B 型	23	11	6.6	18	36	C5	31	37.5	44	56	54	92
3E-08	A 型	30	14	9	25	15	C6	35	36	50	56	62	-
	B 型	30	14	9	24	41	C6	35	56	50	76	62	112
3E-10	A 型	35	17.5	11	26.5	17.5	C5	40	40	60	64.5	70	-
	B 型	35	17.5	11	26	47.5	C5	40	71.5	60	96	70	129

3R 夾頭之標準生爪 Standard Soft Jaw for 3R chuck

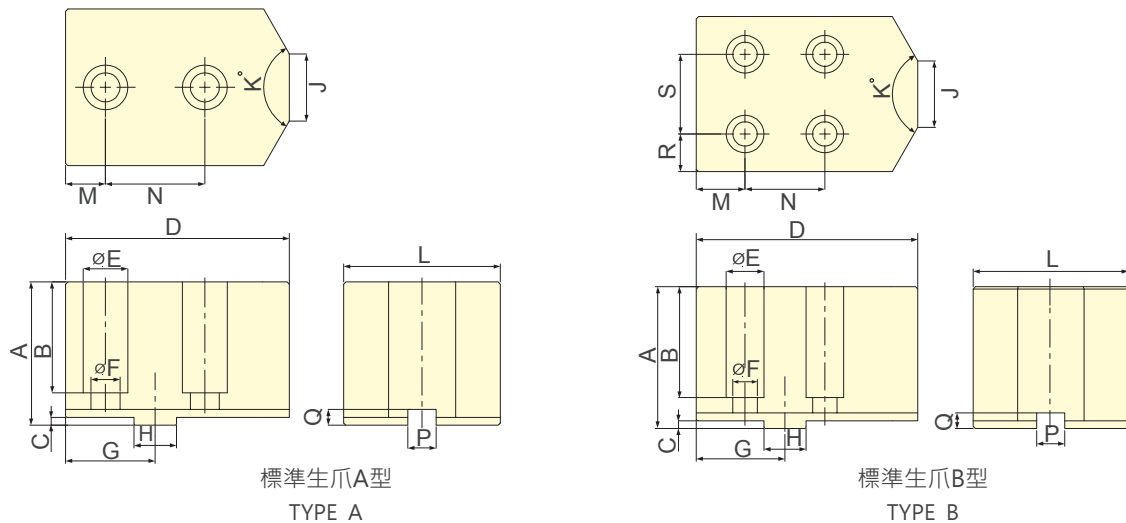


保留規格修改的權利
Subject to technical changes

外型尺寸 DIMENSIONS

型號 MODEL	A	B	C	D	E	F	G	H	J	K	L	M	N	P	Q	R	S	T
3R-08	29.5	13	3.5	82	20	14	27	12	55	30	5	14	26	90	2	40	16	7
3R-10	30.5	15	3.5	102	23	16	37	15	65	30	7	21	32	90	2	40	18	7

3W 夾頭之標準生爪 Standard Soft Jaw for 3W chuck



保留規格修改的權利 Subject to technical changes

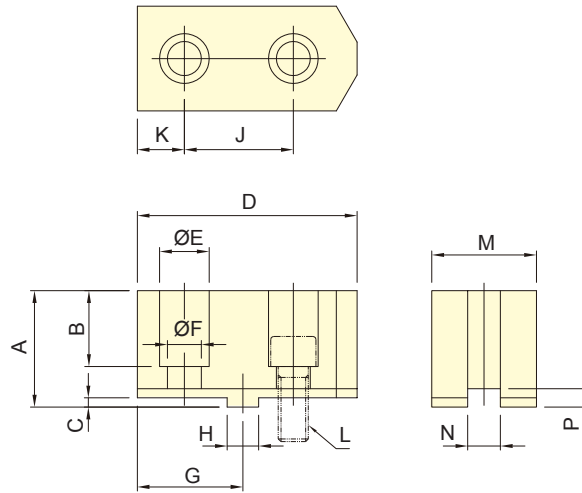
外型尺寸 DIMENSIONS

型號 MODEL	A	B	C	D	E	F	G	H	J	K	L	M	N	P	Q	R	S	
3W-08	A 型	60	44	3.5	80	20	13	35	12.68	30	120	57	16	38	7.94	7	-	-
	B 型	60	48	3.5	80	17	11	35	12.68	30	120	57	19	32	7.94	7	12.5	32
3W-10	A 型	64	49.5	3.5	100	20	13	40	19.03	30	120	70	17.8	44.4	12.7	7	-	-
	B 型	64	50	3.5	100	17	11	40	19.03	30	120	70	22	36	12.7	7	17	36
3W-12	A 型	64	49.5	3.5	100	20	13	40	19.03	30	120	70	17.8	44.4	12.7	7	-	-
	B 型	64	50	3.5	100	17	11	40	19.03	30	120	70	22	36	12.7	7	17	36

*3W 系列軟爪可搭配鑄鋼爪，根據工件條件選擇鑄鋼爪型式，訂製生產。

*3W series Carbide gripper is optional. * The type of the gripper is selected according to the work-piece conditions.

3MF 夾頭之標準生爪 Standard Soft Jaw for 3MF chuck

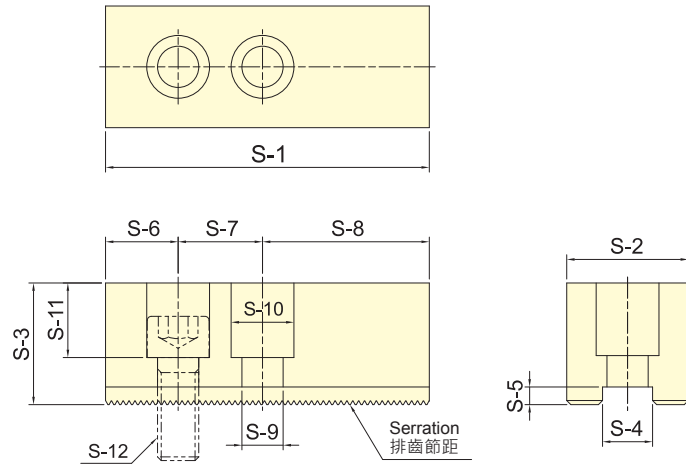
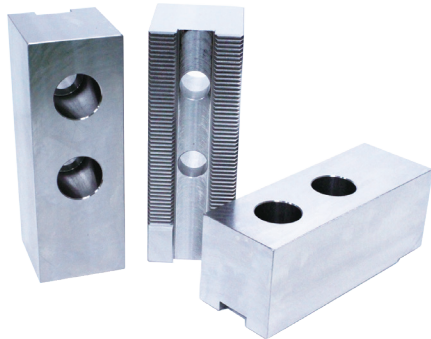


保留規格修改的權利
Subject to technical changes

外型尺寸 DIMENSIONS

型號 MODEL	A	B	C	D	E	F	G	H	J	K	L	M	N	P	三爪重量 (kg) 3 Jaw Weight
3MF-20	70	48	6	160	25	17	80	19.03	76.2	41.9	M16	50	12.7	11.5	10.4

AP 夾頭之標準生爪 Standard Soft Jaw for AP chuck



保留規格修改的權利
Subject to technical changes

外型尺寸 DIMENSIONS

型號 MODEL	S-1	S-2	S-3	S-4	S-5	S-6	S-7	S-8	S-9	S-10	S-11	S-12	排齒節距	適用夾頭	三爪重量 (kg)
													Serration Pitch	Matching Chuck	3 Jaw Weight
SJ-185	165	62	62	25.5	9	37	43	85	21	32	38	M20	3.0×60°	AP-145, AP-185	12.2
SJ-275	180	64	70	25.5	9	40	60	80	21	32	45	M20	3.0×60°	AP-230, AP-275	16.1
SJ-320	210	75	80	30	9	40	60	110	26	38	55	M24	3.0×60°	AP-320, AP-375	24.7

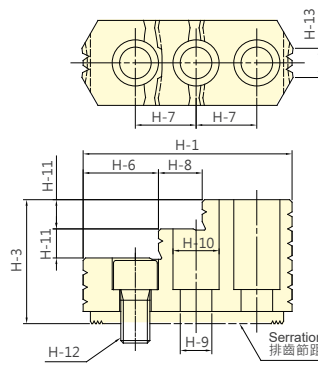
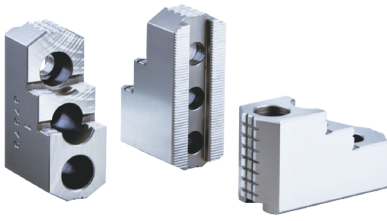


FIG. 1

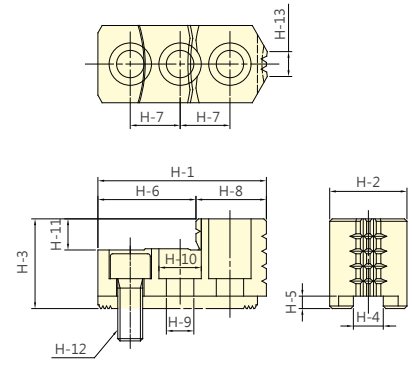


FIG. 2

保留規格修改的權利
Subject to technical changes

外型尺寸 DIMENSIONS

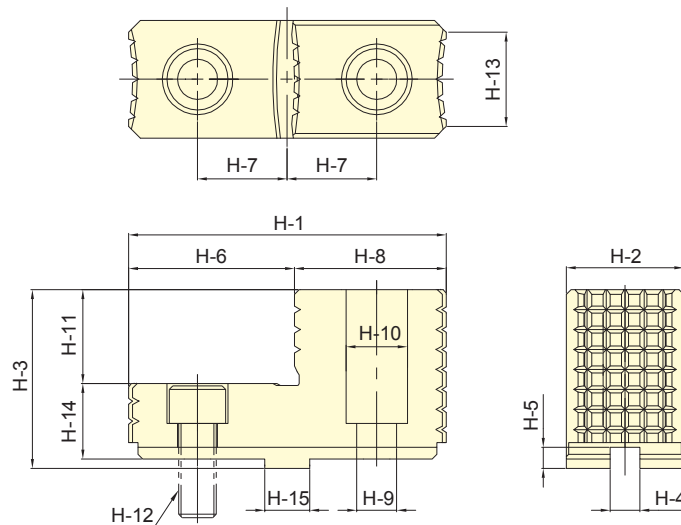
型號 MODEL	H-1	H-2	H-3	H-4	H-5	H-6	H-7	H-8	H-9	H-10	H-11	H-12	H-13	排齒節距 Serration Pitch	適用夾頭 Matching Chuck	三爪重量 3 Jaw Weight kg	參考圖 Reference Drawing
	HJ-05	54.2	23	28	10	4	31.1	14	23.1	8.5	13.5	10	M8				
HJ-06	67.6	31	36	12	5	40.2	20	27.4	11	17	12	M10	9.3	1.5×60°	3H-206, 3P-06	1.7	Fig.2
HJ-08	86.1	35	51	14	5	33.5	25	18.4	13	19	12	M12	14	1.5×60°	3H-208, 3P-08	2	Fig.1
HJ-10	100	40	54	16	5	39.5	30	22.5	13	19	13	M12	15	1.5×60°	3H-210, 3P-10	3	Fig.1
*HJ-12H	100.2	50	52	21	5	64.7	30	35.5	17	25	17	M16	31.5	1.5×60°	3H-12, 3H-212, 3L-212, 3V-12, 3P-12, 3M-12	3.5	Fig.2
*HJ-12P	100.2	50	52	18	5	64.7	30	35.5	15	23	17	M14	31.5	1.5×60°	3H-12, 3H-212, 3L-212, 3V-12, 3P-12, 3M-12	3.6	Fig.2
*HJ-15H	140.7	62	86	22	8	62.5	43	34	21	32	20	M20	43	1.5×60°	3H-15, 3H-215, 3H-18, 3L-15 3V-15, 3V-18, 3P-215, 3P-218	9.6	Fig.1
*HJ-15P	140.7	62	86	25.5	6	62.5	43	34	21	32	20	M20	43	1.5×60°	3H-15, 3H-215, 3H-18, 3L-15 3V-15, 3V-18, 3P-215, 3P-218	9.5	Fig.1
HJ-21	153.5	80	90	25	9	103.7	50	49.8	21	32	40	M20	56.5	3.0×60°	3H-221, 3H-224, 3H-232, 3P-221, 3P-224, 3V-21, 3V-24, 3V-32	14.3	Fig.2

* HJ-12H、HJ-12P、HJ-15H、HJ-15P 選用前請確認 H-4 的尺寸。

* For HJ-12H, HJ-12P, HJ-15H, HJ-15P, please confirm the dimension of H-4 before placing the order.

3MF 標準硬爪

STANDARD HARDEN JAW FOR 3MF CHUCK

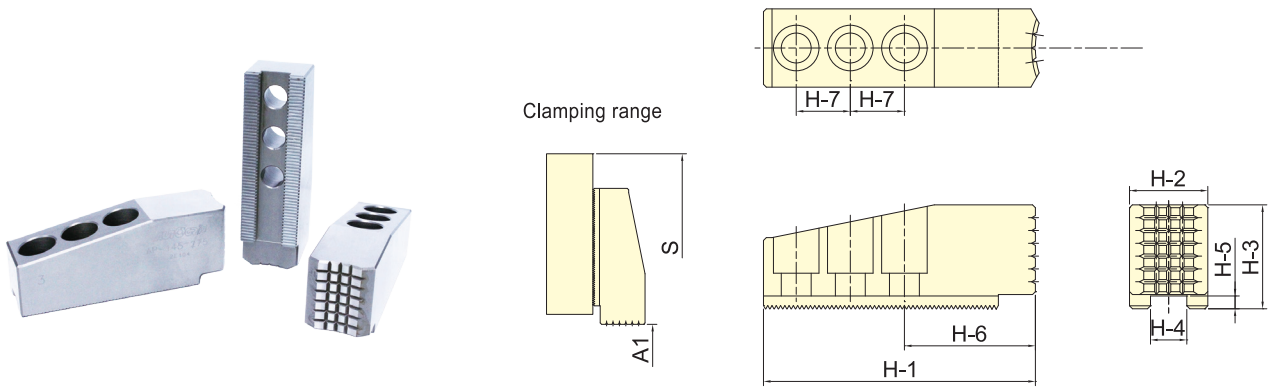


保留規格修改的權利 Subject to technical changes

外型尺寸 DIMENSIONS

型號 Model	H-1	H-2	H-3	H-4	H-5	H-6	H-7	H-8	H-9	H-10	H-11	H-12	H-13	H-14	H-15	適用夾頭 Matching Chuck	三爪重量 kg 3 Jaw Weight
	3MF-20	135	50	76	12.7	9	70	38.1	65	17	26	40	M16	40	32		

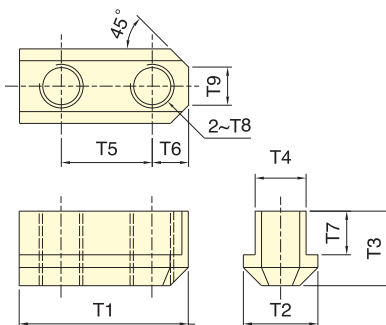
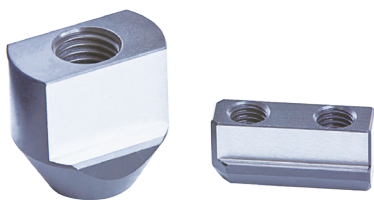
AP 標準硬爪 STANDARD HARDENED JAW FOR AP CHUCK



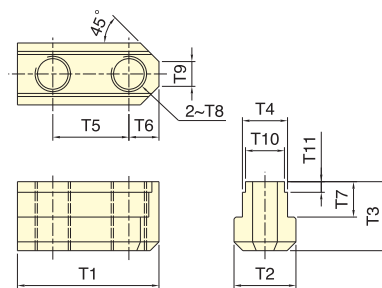
保留規格修改的權利 Subject to technical changes

外型尺寸 DIMENSIONS

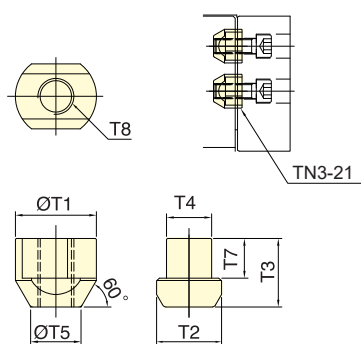
型號 Model	H-1	H-2	H-3	H-4	H-5	H-6	H-7	A1	S	排齒節距	適用夾頭	三爪重量 kg
											Serration Pitch	Matching Chuck
HJ-145	191	55	73	25.5	9	92	38	30-125	420	3.0×60°	AP-145	12.5
HJ-145	191	55	73	25.5	9	92	38	35-165	460	3.0×60°	AP-185	12.5
HJ-145	191	55	73	25.5	9	92	38	55-240	535	3.0×60°	AP-230	12.5
HJ-145	191	55	73	25.5	9	92	38	100-285	580	3.0×60°	AP-275	12.5
HJ-320	243	75	82	30	9	110	50	105-300	658	3.0×60°	AP-320	24.6
HJ-320	243	75	82	30	9	110	50	165-375	738	3.0×60°	AP-375	24.6



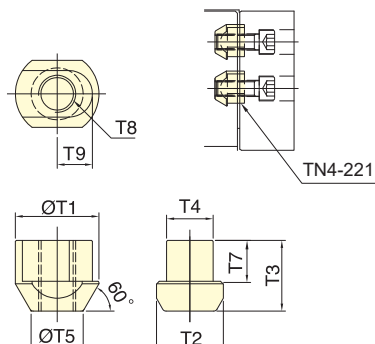
TN1



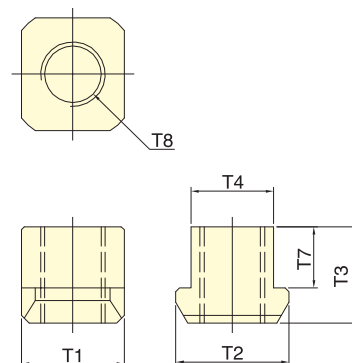
TN2



TN3



TN4



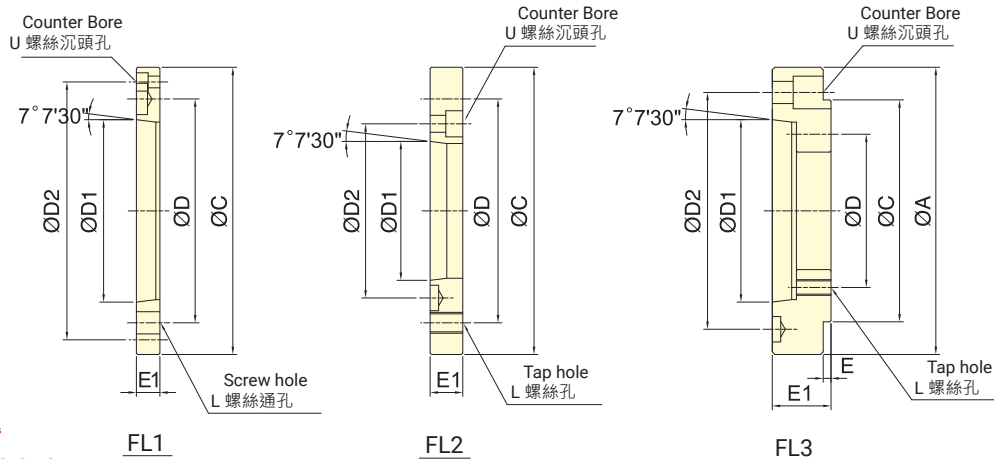
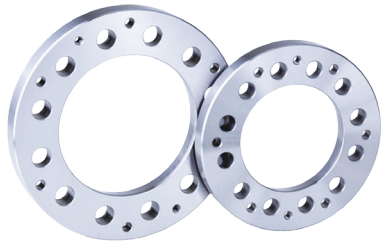
TN5

保留規格修改的權利
Subject to technical changes

外型尺寸 DIMENSIONS

型號 Model	T1	T2	T3	T4	T5	T6	T7	T8	T9	T10	T11	適合夾頭 Matching Chuck	三只重量 3 Pcs Weight
													kg
TN1-04	26	14	15	10	14	6	9.5	M8	5	-	-	H-204, H-205, P-04, P-05, L-205, M-05, SP-304	0.06
TN1-06	36	17	18.5	12	20	8	11	M10	6	-	-	H-206, P-06, L-206, 1L-06, M-06, 3N-06, AP-52, RAP-306, SP-306	0.15
TN1-08	46.5	20	20.5	14	25	10.5	12	M12	10	-	-	H-208, P-08, L-208, 1L-08, M-08, 3N-08, 4T-08, AP-66, RAP-308, SP-308	0.27
TN1-10	51	22	21.5	16	30	11	13	M12	11	-	-	H-210, P-10, L-210, 1L-10, M-10, 3N-10, 4T-10, AP-86, RAP-310, SP-310	0.36
* TN1-12	55.5	29.5	28	21	30	12	16.7	M16	13	-	-	2H-12, P-12, L-12, M-12	0.63
TN2-12	55.5	29.5	28	21	30	12	16.7	M14	13	18	4.5	2H-12, P-12, L-12, M-12	0.63
* TN1-15	80	35	39.5	25.5	43	17	20.5	M20	14	-	-	2H-15, 3H-18B, P-15, P-215, P-218, L-15, M-215, M-218, V-15, V-18	1.53
TN2-15	80	35	39.5	25.5	43	17	20.5	M20	14	22	6	2H-15, 3H-18B, P-15, P-215, P-218, L-15, M-215, M-218, V-15, V-18	1.5
* TN1-212	56	29.5	23.5	21	30	12	12	M16	10	-	-	3H-12, 4H-12, H-212, L-212, V-12, 4T-15, AP-115	0.63
TN2-212	56	29.5	23.5	21	30	12	12	M14	10	18	4	3H-12, 4H-12, H-212, L-212, V-12, 4T-15, AP-115	0.63
* TN1-215	80	35	34	25.5	43	17	19	M20	14	-	-	3H-15, 4H-15, 3H-18, 4H-18, H-215, L-215, SP-316	1.32
TN2-215	80	35	34	25.5	43	17	19	M20	14	22	6	3H-15, 4H-15, 3H-18, 4H-18, H-215, L-215, SP-316	1.29
TN3-21	46	37.5	45	25	26	-	26	M20	-	-	-	P-221, P-224, M-221, M-224, V-21, V-24, V-32	1.84
TN4-221	45	36	38	25	28	-	22	M20	19	-	-	H-221, H-224, H-232, SP-320, SP-324	0.63
TN5-185	32	35	30	25.5	-	-	19	M20	-	-	-	AP-145, AP-185, AP-230, AP-275	0.15
TN5-320	36	42	39	30	-	-	24	M24	-	-	-	AP-320, AP-375	0.24

* TN1-12 & TN1-212 為 12" 夾頭出廠配備。(12" Chucks are originally equipped with TN1-12 & TN1-212.)
* TN1-15 & TN1-215 為 15" 夾頭出廠配備。(15" Chucks are originally equipped with TN1-15 & TN1-215.)



保留規格修改的權利
Subject to technical changes

外型尺寸 DIMENSIONS

Model	A	C	D	D1	D2	E	E1	L	U	備註 Remark	重量 Weight (kg)
FL3-04A24	110	85	70.6	63.513	82.6	8	28	M10	M10	3H-204, 2H-204	1.12
FL3-04A25	140	85	70.6	82.563	104.8	5.5	32	M10	M10	3H-204, 2H-204	2.28
FL1-05A24	-	110	82.6	63.513	96	-	15	M10	M6	3H-205, 2H-205, 3L-05, 2L-05, 3J-05, 2J-05	0.65
FL3-05A25	135	110	82.6	82.563	104.8	6	30	M10	M10	3H-205, 2H-205, 3L-05, 2L-05	1.99
FL1-06A25	-	140	104.8	82.563	116	-	15	M10	M6	2H-206, 4H-206, 3H-206, 3P-06, 2P-06, 3M-06, 2M-06, 3E-06, 3D-06, 2D-06, 3N-06, 3J-06, 2J-06	0.96
							*18				
FL3-06A26	165	140	104.8	106.375	133.4	6	35	M10	M12	2H-206, 4H-206, 3H-206, 3L-206, 2L-206, 3P-06, 2P-06, 3M-06, 2M-06, 3E-06, 3D-06, 2D-06, 3N-06, 3J-06, 2J-06	3.12
FL2-08A25	-	170	133.4	82.563	104.8	-	23	M12	M10	3H-208, 2H-208, 4H-208, 3P-08, 2P-08, 3M-08, 2M-08, 4T-08, 3E-08, 3D-08, 2D-08, 3N-08, 3J-08, 2J-08, 3R-08, 3W-08, 3Q-08	2.7
FL1-08A26	-	170	133.4	106.375	150	-	17	M12	M6	2H-208, 4H-208, 3H-208, 3P-08, 2P-08, 3M-08, 2M-08, 4T-08, 3E-08, 3D-08, 2D-08, 3N-08, 3J-08, 2J-08, 3R-08, 3W-08, 3Q-08	1.55
							*23				
FL2-10A26	-	220	171.4	106.375	133.4	-	25	M16	M12	4H-10, 3P-10, 2P-10, 3M-10, 2M-10, 3H-12, 2H-12, 4H-12, 3L-212, 2L-12, 3P-12, 2P-12, 3M-12, 2M-12, 4T-10, 4T-12, 3E-10, 3D-10, 2D-10, 3N-10, 3J-10, 2J-10, 3R-10, 3Q-10, 3W-10, 3W-12	5.02
FL1-10A28	-	220	171.4	139.719	190	-	18	M16	M8	2H-210, 4H-10, 3H-210, 3L-210, 2L-210, 3P-10, 2P-10, 3M-10, 2M-10, 3H-12, 2H-12, 4H-12, 3L-212, 2L-12, 3P-12, 2P-12, 3M-12, 2M-12, 4T-10, 4T-12, 3E-10, 3D-10, 2D-10, 3N-10, 3J-10, 2J-10, 3R-10, 3Q-10, 3Q-12, 3W-10, 3W-12	2.73
FL2-15A28	-	300	235	139.719	171.4	-	33	M20	M16	3H-15, 3H-212, 2H-15, 4H-15, 3L-15, 2L-15, 3P-215, 2P-15, 3M-15, 2M-15, 4T-15, 3H-18, 4H-18, 3P-218	12.52
FL1-15A211	-	300	235	196.869	260	-	22	M20	M10	3H-15, 3H-212, 2H-15, 4H-15, 3L-15, 2L-15, 3P-215, 2P-15, 3M-15, 2M-15, 4T-15, 3H-18, 4H-18, 3P-218	6.03
FL2-21A28	-	380	330.2	139.719	171.4	-	33	M24	M16	3H-215, 3P-221, 3P-224	22.05
FL2-21A211	-	380	330.2	196.869	235	-	40	M24	M20	3H-215	16.28
							*27				
FL1-21A215	-	380	330.2	285.775	330.2	-	27	M24	M12	3H-215, 3H-18B, 3H-221, 3P-221, 3P-224	8.6
FL2-40A215	-	520	463.6	285.775	330.2	-	40	M24	M24	3H-224	43.26
FL1-40A220	-	520	463.6	412.775	463.6	-	27	M24	M12	3H-224, 3H-232	13.55

** 記號表示接單生產之型號規格，無現貨供應。(Models with "*" mark are produced only by order.)



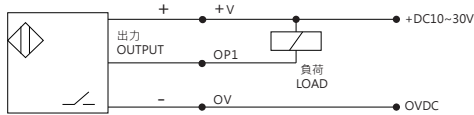
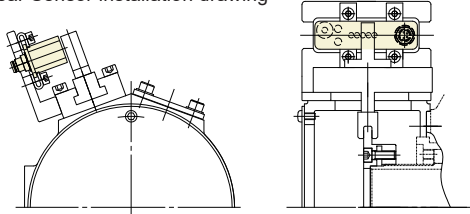
- 可附加行程確認裝置和線性檢知裝置(選配)。
- The proximity switch and linear Sensor are optional.
- 行程確認裝置。(選配) The proximity switch is optional.

電壓	負荷容量	輸出規格
Power supply	Switching cap.	Output tpye
DC 10/30V	100mA	NPN

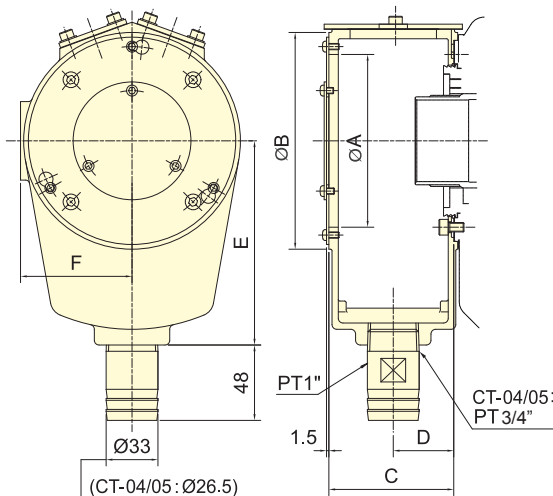
端子連接 Terminal Connections

+V	OP1	OV
棕 BROWN	黑 BLACK	藍 BLUE

線性檢知裝置安裝示意圖 linear Sensor installation drawing

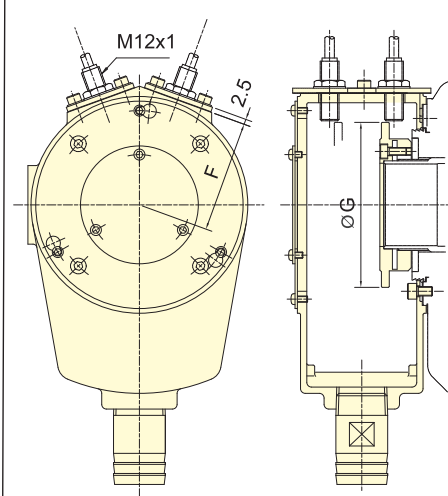


CT



集水盒
Coolant Collector

CT-S



集水盒與檢出環
Coolant Collector with Detecting Ring

保留規格修改的權利
Subject to technical changes

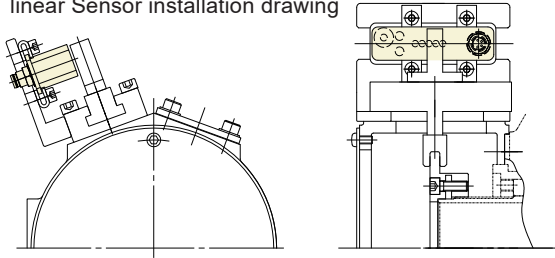
外型尺寸 DIMENSIONS

Model	A	B	C	D	E	F	G	重量Weight (kg)		適用迴轉缸
								CT	CT-S	Matching cyl.
CT-04/CT-04S	87	110	60	29	110	57	79	0.9	1.1	TH-428
CT-05/CT-05S(TH)	87	110	60	29	110	57	84	0.9	1.1	TH-A536
CT-05/CT-05S(TK)	87	110	60	29	110	57	84	0.9	1.1	TK-A528, TK-A533
CT-06/CT-06S	100	125	74	36	120	64.5	94	1.2	1.6	TK-C643, TK-A646, TK-B646, TK-C646, TR-646
CT-08/CT-08S	110	138	80	39	130	71	105	1.3	1.8	TK-B846, TK-A853, TK-B853, TR-853
CT-K10/CT-K10S	158	185	88	43	160	94.5	145	1.9	2.6	TK-A1068, TK-A1075, TK-A1078, TR-1075
CT-12/CT-12S	158	185	88	43	160	94.5	145	1.9	2.6	TK-A1287, TK-A1291, TR-1291
CT-15/CT-15S	206	235	100	50	210	121	190	3.1	4.3	TK-A1511, TK-A1512, TK-A1512-35
CT-21/CT-21S	226	255	100	50	210	131	210	3.3	4.6	TK-2114
CT-24/CT-24S	250	270	100	50	230	154	248	3.5	5.5	TK-2416, TK-2416L
CT-28/CT-28S	310	330	100	50	260	181	305	4.3	7.2	TK-2820



- 可附加行程確認裝置和線性檢知裝置(選配)。
- 加大的排水管接頭Ø40和Ø60(選購品)。
- Ø60排水管接頭只適用於CT-S08B、CT-S10B、CT-S12B。
- The proximity switch and linear Sensor are optional.
- Drain port Ø40 and Ø60 are optional product.
- Drain port Ø60 only use to CT-S08B,CT-S10B,CT-S12B.

■ 線性檢知裝置安裝示意圖
linear Sensor installation drawing

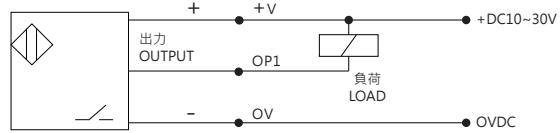


■ 行程確認裝置。(選配) The proximity switch is optional.

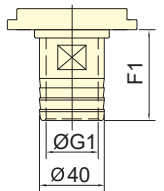
電壓	負荷容量	輸出規格
Power supply	Switching cap.	Output tpe
DC 10/30V	100mA	NPN

■ 端子連接 Terminal Connections

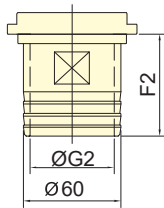
+V	OP1	OV
棕 BROWN	黑 BLACK	藍 BLUE



CT-SB

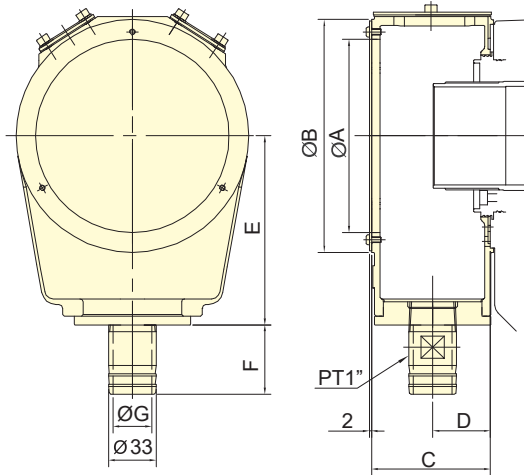


Ø 40 排水管接頭
Drain port
為選配件



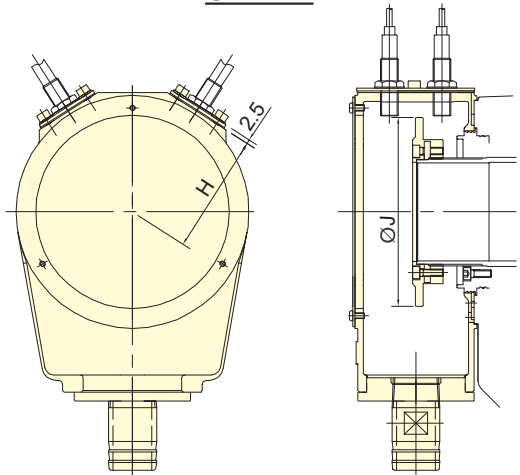
Ø 60 排水管接頭
Drain port
為選配件

(只適用於Only use to
CT-S08B/CT-S10B/CT-S12B)



集水盒
Coolant Collector

CT-SBS

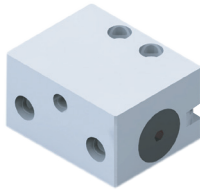


集水盒與檢出環
Coolant Collector with Detecting Ring

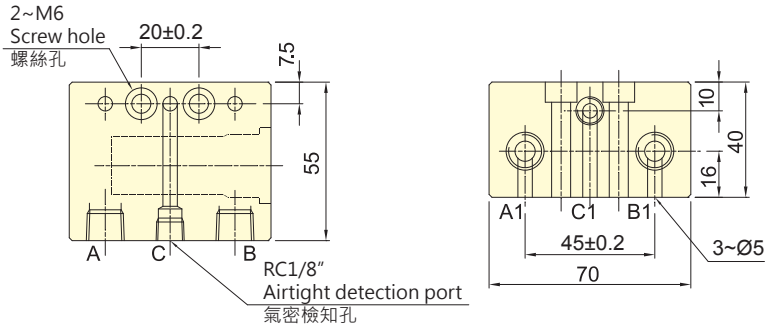
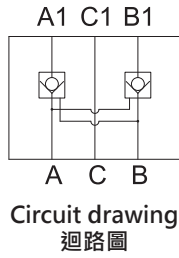
保留規格修改的權利
Subject to technical changes

外型尺寸 DIMENSIONS

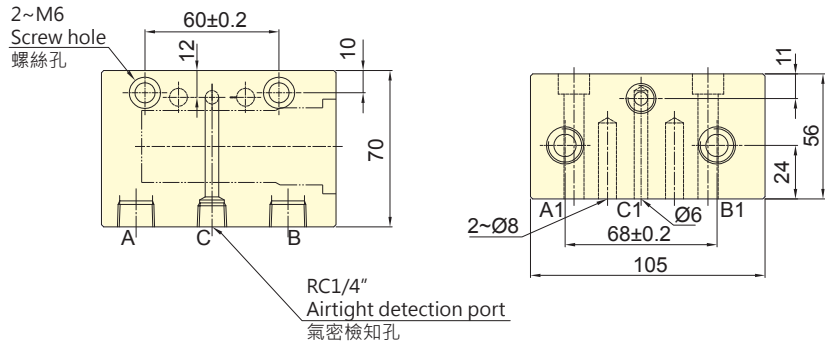
Model	A	B	C	D	E	F	F1	F2	G	G1	G2	H	J	重量Weight (kg)		適用迴轉缸
														CT-SB	CT-SBS	Matching cyl.
CT-S05B/CT-S05BS	97	120	68.3	33.3	96	49.6	56	-	25	32	-	62	86	1.1	1.6	TS-539, TR-539
CT-S08B/CT-S08BS	133	160	82	40	130	49.6	56	63	25	32	52	82	130	0.9	1.4	TS-866
CT-S10B/CT-S10BS	160	188	88	43	148	49.6	56	63	25	32	52	96	148	1.16	2.9	TS-1081
CT-S12B/CT-S12BS	200	232	88	43	171	49.6	56	63	25	32	52	118	190	2.6	4.0	TS-1210



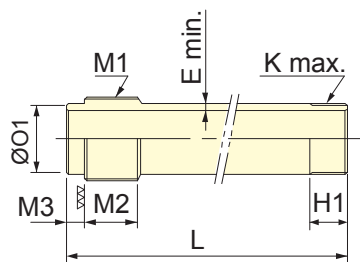
Model:FV-01



Model:FV-03

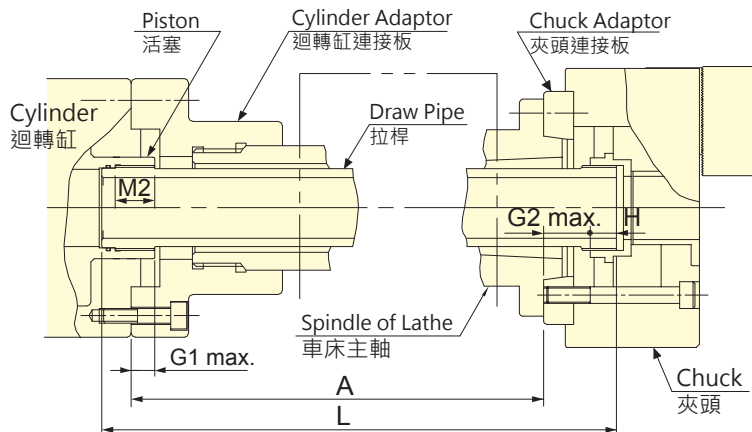


保留規格修改的權利
Subject to technical changes



中空拉桿詳圖 Detail of Draw Tube

$$L = A + G2_{max.} + H - G1_{max.} + M2 + M3$$



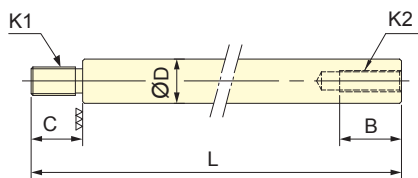
保留規格修改的權利
Subject to technical changes

技術規格 SPECIFICATIONS

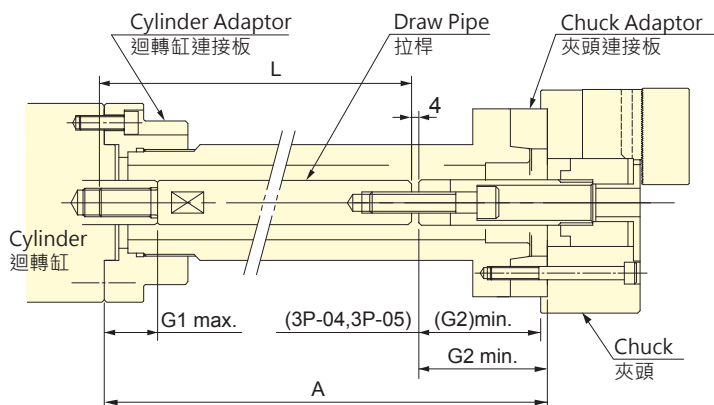
夾頭規格 Chuck type	迴轉缸規格 Cylinder type	G1 max.	H	M3	M2	G2 max.	M1	H1	O1 (f7)	K max.	E min.	L		
3H-12	A8	TK-A1291	30	23	12	35	28	M100x2	35	95	-0.036 -0.071	M100x2	5	A+56+12
3H-15	A11	TK-A1512	30	33	12	45	33	M130x2	45	125	-0.043 -0.083	M130x2	5	A+81+12
3H-18	A11	TK-A1512	30	33	12	45	33	M130x2	45	125	-0.043 -0.083	M130x2	5	A+81+12

夾頭規格 Chuck type	迴轉缸規格 Cylinder type	G1 max.	H	M3	M2	G2 max.	M1	H1	O1 (f7)	K max.	E min.	L		
3H-204	A4	TK-A528	12	14.5	10	25	31.5	M38x1.5	20	35	-0.025 -0.05	M38x1.5	5	A+59+10
3H-205	A4	TK-A533	12	17	10	25	16	M38x1.5	25	35	-0.025 -0.05	M45x1.5	5	A+46+10
3H-206	A5	TK-A646	15	14	10	25	28	M55x2	20	50	-0.025 -0.05	M60x2	5	A+52+10
3H-208	A6	TK-A853	20	16.5	12	30	33.5	M60x2	20	55	-0.03 -0.06	M75x2	5	A+60+12
3H-210	A8	TK-A1075	25	21	12	35	28.5	M85x2	25	80	-0.03 -0.06	M95x2	5	A+59.5+12
3H-212	A11	TK-A1512	30	23	12	45	32	M130x2	30	125	-0.043 -0.083	M115x2	5	A+70+12
3H-215	A8	TK-2114	35	33	17	45	44	M155x2	40	145	-0.043 -0.083	M115x2	5	A+87+17
3H-215	A11	TK-2114	35	33	17	45	51	M155x2	40	145	-0.043 -0.083	M155x3	5	A+93+17
3H-215	A15	TK-2114	35	33	17	45	38	M155x2	40	145	-0.043 -0.083	M155x3	5	A+81+17
3H-18B	A15	TK-2416	35	35	17	45	45	M180x3	40	170	-0.043 -0.083	M175x3	5	A+90+17
3H-221	A15	TK-2416	35	34	17	45	42	M180x3	40	170	-0.043 -0.083	M190x3	5	A+86+17
3H-224	A20	TK-2820	51	35	17	45	42	M220x3	40	210	-0.050 -0.096	M225x3	5	A+71+17
3H-232	A20	TK-2820	51	37	17	45	51	M220x3	45	230	-0.050 -0.096	M295x3	5	A+82+17

註：2H,4H 型式之拉桿長度計算同 3H、3H-2 型式。(Note: To calculate the draw-tube length of 2H,4H as 3H,3H-2.)



中實拉桿詳圖 Detail of Draw Bar
 $L=A-G1max.-G2min.-4+C$



保留規格修改的權利
Subject to technical changes

技術規格 SPECIFICATIONS

夾頭型式 Chuck type	迴轉缸型式 Cylinder type	B	C	D	G1 max.	G2 min.	K1	K2	L
3P-04	RK-75(N)/RA-130	30	30/20	30/25	45	3	M20x2.5/M16x2	M10x1.5	A-22/A-32
3P-05	RK-75(N)/RA-130	40	30/20	30/25	45	-6	M20x2.5/M16x2	M12x1.75	A-13/A-23
3P-06	RK-100(N)/RA-170	40	30/25	30/25	45	81.5	M20x2.5/M16x2	M16x2	A-101/A-106
3P-08	RK-125(N)/RA-220	40	40/30	35/30	50	106	M24x3/M20x2.5	M20x2.5	A-120/A-130
3P-10	RK-125(N)/RA-220	40	40/30	35/30	50	133	M24x3/M20x2.5	M20x2.5	A-147/A-157
3P-12	RK-150(N)/RA-270	40	40/35	45/35	55	133	M30x3.5/M24x3	M20x2.5	A-152/A-157
3P-215	RK-200(N)/RH-200	60	55	55	70	69	M36x4	M30x3.5	A-88
3P-218	RK-200(N)/RH-200	60	55	55	70	57	M36x4	M30x3.5	A-76
3P-221	RK-200(N)/RH-200	60	55	55	70	62	M36x4	M30x3.5	A-81
3P-224	RK-200(N)/RH-200	60	55	55	70	62	M36x4	M30x3.5	A-81

註 :2P 型式之拉桿長度計算同 3P 型式。(Note:To calculate the draw-bar length of 2P as 3P.)

夾頭型式 Chuck type	迴轉缸型式 Cylinder type	B	C	D	G1 max.	G2 min.	K1	K2	L
3M-05	RK-75(N)	40	30	30	45	-2	M20x2.5	M12x1.75	A-17
3M-06	RK-100(N)	40	30	30	45	81.5	M20x2.5	M16x2	A-101
3M-08	RK-125(N)	40	40	35	50	106	M24x3.0	M20x2.5	A-120
3M-10	RK-150(N)	40	40	35	50	135	M24x3.0	M20x2.5	A-148
3M-12	RK-150(N)	50	40	45	55	40	M30x3.5	M24x3	A-59

註 :2M 型式之拉桿長度計算同 3M 型式。(Note:To calculate the draw-bar length of 2M as 3M.)



