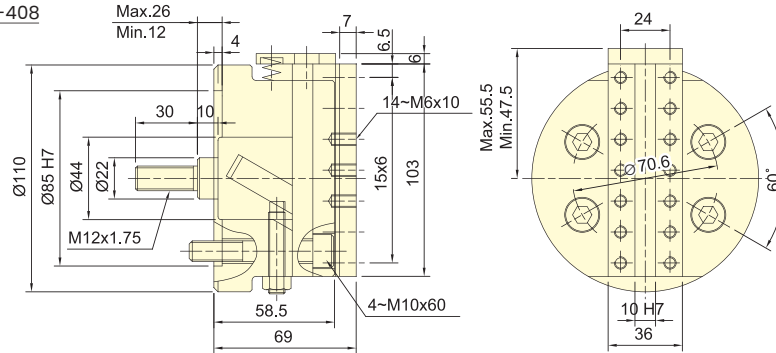




- 進給機構是以單斜楔式的傳動方式為之，進給速度穩定，進給速度與行程的調整非常容易。
- 摺動面均經過硬化及精密研磨，剛性與耐久性非常良好。
- 定位精度:±0.03mm。
- Feed mechanism is Wedge Plunger, with steady feed speed. Simple adjustment for feed speed and stroke.
- Matching surfaces of all parts hardened, grinding and lubricated directly. With rigidity and durability.
- Stopper accuracy: ±0.03mm.
- 與行控型迴轉油壓缸搭配使用。
- 單斜楔式展刀頭可搭配伺服馬達及滾珠螺桿機構做精密展刀加工。
- Suitable for using with RS type cylinder.
- For precision processes, Wedge Plunger type facing heads are suitable for using with electro servo and ball screw mechanism.

單斜楔式傳動
WEDGE PLUNGER
FA-408



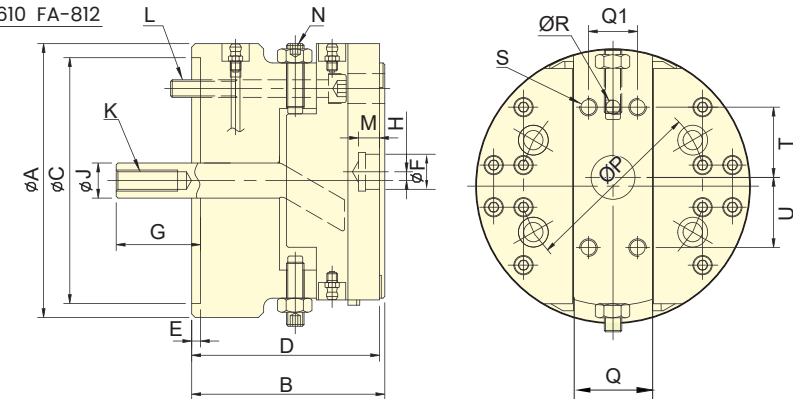
保留規格修改的權利
Subject to technical changes

技術規格 SPECIFICATIONS

型號	楔心行程	滑座行程	最高迴轉數	容許最大入力	重量	適用迴轉缸	最大使用壓力
Model	Plunger stroke	Slider stroke	Max. speed	Max. D.B. PULL	Weight	Matching cylinder	Max. pressure
	mm	mm	min ⁻¹ (r.p.m.)	kN(kgf)	kg		MPa(kgf/cm ²)
FA-408	14	8	1600	2.8 (280)	4.2	RS-6520N	1.0(10)



單斜楔式傳動
WEDGE PLUNGER
FA-610 FA-812



保留規格修改的權利
Subject to technical changes

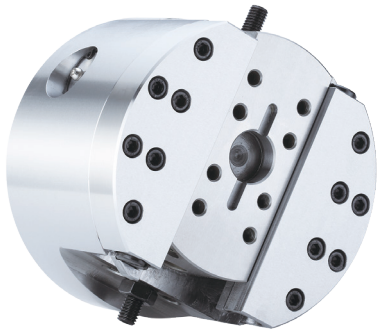
技術規格 SPECIFICATIONS

型號	楔心行程	滑座行程	最高迴轉數	容許最大入力	重量	適用迴轉缸	最大使用壓力
Model	Plunger stroke	Slider stroke	Max. speed	Max. D.B. PULL	Weight	Matching cylinder	Max. pressure
	mm	mm	min ⁻¹ (r.p.m.)	kN(kgf)	kg		MPa(kgf/cm ²)
FA-610	18	10	1200	2.8 (280)	14.5	RS-6520N	1.0(10)
FA-812	21	12	800	4.4 (450)	28.5	RS-6530N	1.6(16)

外型尺寸 DIMENSIONS

Model	A	B	C (H7)	D	E	F (H7)	G max.	G min.	H	J	K
FA-610	156	110	140	107	5	20	66	48	±5	20	M12x1.75
FA-812	198	130	170	127	5	25	84	63	±6	25	M16x2.0

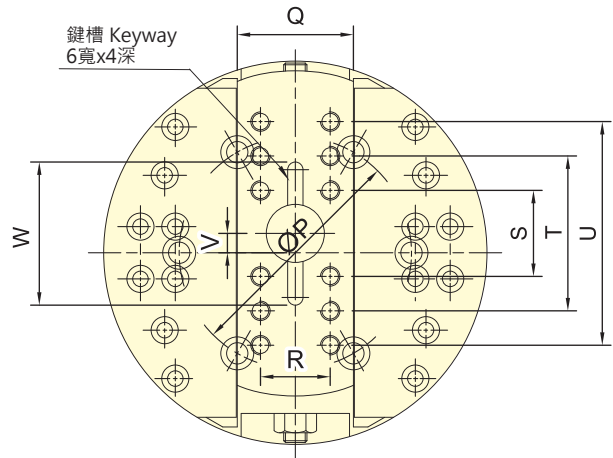
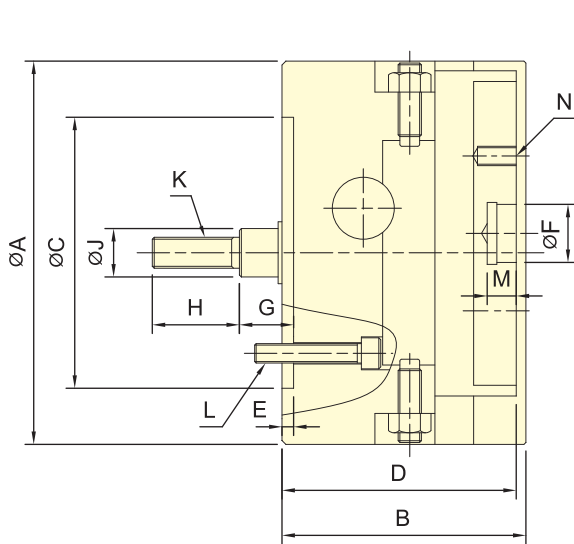
Model	L	M	N	P	Q	Q1	R (H8)	S	T	U
FA-610	4-M10x90	12	2-M10x45	104.8	45	28	8	4-M10x16	40	40
FA-812	4-M12x105	12	2-M12x60	133.4	54	32	10	4-M10x16	50	50



- 進給機構是以齒條與齒輪傳動方式為之，進給速度穩定，進給速度與行程的調整非常容易。
- 摺動面均經過硬化及精密研磨，剛性與耐久性非常良好。
- 定位精度: $\pm 0.03\text{mm}$ ，需搭配定位螺栓。
- Feed mechanism is transmitted by Rack and Pinion with steady feed speed. Simple adjustment for feed speed and stroke.
- Matching surfaces of all parts hardened, grinding and lubricated directly. With rigidity and durability.
- Stopper accuracy: $\pm 0.03\text{mm}$, work with stoper screw.
- 與行控型迴轉油壓缸搭配使用。
- Suitable for using with RS type cylinder.

齒條與齒輪傳動 RACK AND PINION

FA-615 FA-830 FA-1570



保留規格修改的權利
Subject to technical changes

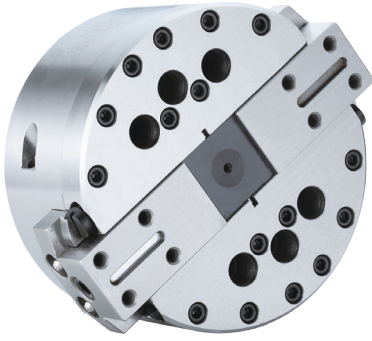
技術規格 SPECIFICATIONS

型號	楔心行程	滑座行程	最高迴轉數	容許最大入力	重量	適用迴轉缸	最大使用壓力
Model	Plunger stroke	Slider stroke	Max. speed	Max. D.B. PULL	Weight	Matching cylinder	Max. pressure
	mm	mm	$\text{min}^{-1}(\text{r.p.m.})$	kN(kgf)	kg		MPa(kgf/cm ²)
FA-615	15	15	1200	3.3 (340)	11.9	RS-6520N	1.2(12)
FA-830	30	30	800	5.0 (510)	23.9	RS-6530N	1.8(18)
FA-1570	70	70	500	18.2 (1855)	167	RS-1080N	2.6(26)

外型尺寸 DIMENSIONS

Model	A	B	C (H7)	D	E	F (H7)	G max.	G min.	H	J	K
FA-615	150	107	110	102	5	25	43	28	35	20	M12x1.75
FA-830	198	126	140	121	6	30	55	25	45	25	M16x2
FA-1570	400	200	300	192	6	60	110	40	75	50	M30x3.5

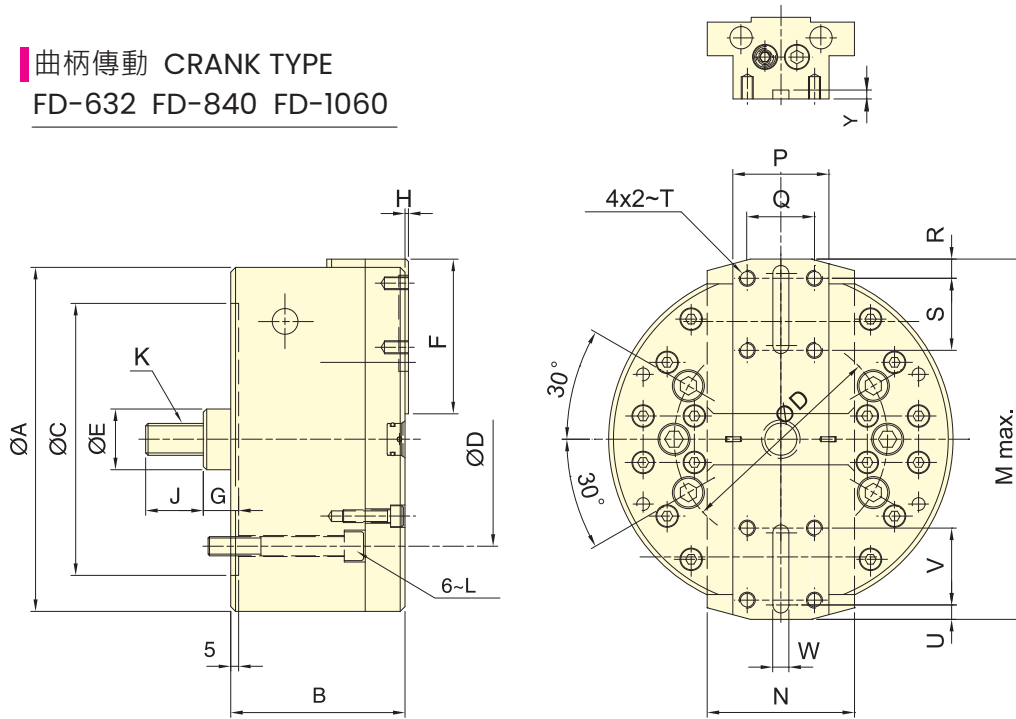
Model	L	M	N	P	Q	R	S	T	U	V	W
FA-615	3-M10x40	12	8-M8x16	82.6	50	32	32	68	-	± 7.5	56
FA-830	6-M10x55	15	12-M10x20	120	60	36	40	80	120	± 15	66
FA-1570	6-M20x90	15	8-M16x20	235	120	80	130	260	-	± 17.5	-



- 進給機構是以曲柄傳動方式為之，進給速度穩定，進給速度與行程的調整非常容易。
- 摺動面均經過硬化及精密研磨，剛性與耐久性非常良好。
- 定位精度：±0.03mm，需搭配定位螺栓。
- Feed mechanism is transmitted by Crank with steady feed speed. Simple adjustment for feed speed and stroke.
- Matching surfaces of all parts hardened, grinding and lubricated directly. With rigidity and durability.
- Stopper accuracy: ±0.03mm, work with stopper screw.
- 與行控型迴轉油壓缸搭配使用。
- Suitable for using with RS type cylinder.

曲柄傳動 CRANK TYPE

FD-632 FD-840 FD-1060



保留規格修改的權利
Subject to technical changes

技術規格 SPECIFICATIONS

型號 Model	楔心行程 Plunger stroke	滑座行程(直徑) Slider stroke(Dia.)	最高迴轉數 Max. speed	容許最大入力 Max. D.B. PULL	重量 Weight	適用迴轉缸 Matching cylinder	最大使用壓力 Max. pressure
	mm	mm	min ⁻¹ (r.p.m.)	kN(kgf)	kg		MPa(kgf/cm ²)
FD-632	20	32	3200	16.9 (1720)	13.6	RS-1030N	2.4(24)
FD-840	25	40	2500	20.6 (2100)	30.0	RS-1030N	3.0(30)
FD-1060	35	60	1800	20.6 (2100)	41.5	RS-1040N	3.0(30)

外型尺寸 DIMENSIONS

Model	A	B	C(H7)	D	E	F	G max.	G Min.	H	J	K
FD-632	168	93	140	104.8	32	76	31	11	2	36	M16x2.0
FD-840	215	109	170	133.4	38	96.5	32.5	7.5	2	36	M20x2.5
FD-1060	254	123	220	171.4	38	110.5	32.5	-2.5	4	36	M20x2.5

Model	L	M	N	P	Q	R	S	T	U	V	W(H8)	Y
FD-632	6~M10x75	188	70	40	25	10	32	M8x15	10	32	6	4
FD-840	6~M12x85	238	92	60	42	12	45	M10x15	12	45	10	6
FD-1060	6~M16x125	286	90	65	46	15	50	M10x15	12	50	10	6