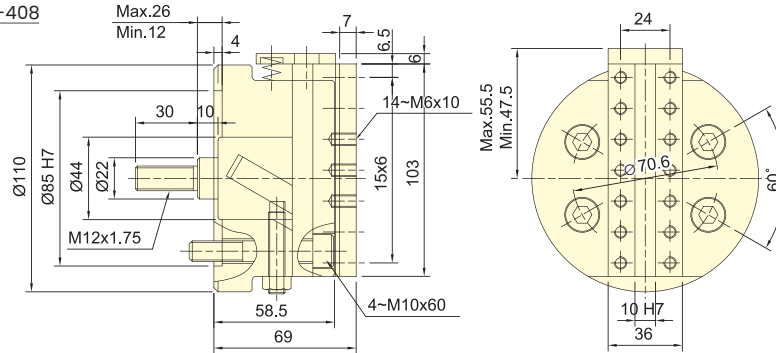




- 進給機構是以單斜楔式的傳動方式為之，進給速度穩定，進給速度與行程的調整非常容易。
- 摺動面均經過硬化及精密研磨，剛性與耐久性非常良好。
- 定位精度:±0.03mm。
- Feed mechanism is Wedge Plunger, with steady feed speed. Simple adjustment for feed speed and stroke.
- Matching surfaces of all parts hardened, grinding and lubricated directly. With rigidity and durability.
- Stopper accuracy: ±0.03mm.
- 與行控型迴轉油壓缸搭配使用。
- 單斜楔式展刀頭可搭配伺服馬達及滾珠螺桿機構做精密展刀加工。
- Suitable for using with RS type cylinder.
- For precision processes, Wedge Plunger type facing heads are suitable for using with electro servo and ball screw mechanism.

單斜楔式傳動  
WEDGE PLUNGER  
FA-408



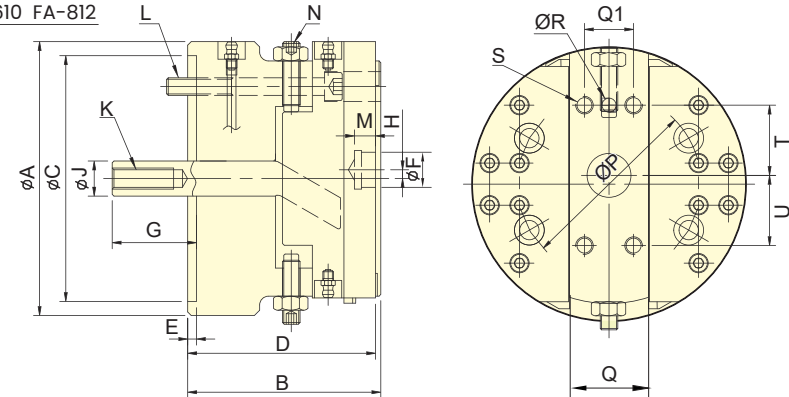
保留規格修改的權利  
Subject to technical changes

### 技術規格 SPECIFICATIONS

型號	楔心行程	滑座行程	最高迴轉數	容許最大入力	重量	適用迴轉缸	最大使用壓力
Model	Plunger stroke	Slider stroke	Max. speed	Max. D.B. PULL	Weight	Matching cylinder	Max. pressure
	mm	mm	min <sup>-1</sup> (r.p.m.)	kN(kgf)	kg		MPa(kgf/cm <sup>2</sup> )
FA-408	14	8	1600	2.8 (280)	4.2	RS-6520N	1.0(10)



單斜楔式傳動  
WEDGE PLUNGER  
FA-610 FA-812



保留規格修改的權利  
Subject to technical changes

### 技術規格 SPECIFICATIONS

型號	楔心行程	滑座行程	最高迴轉數	容許最大入力	重量	適用迴轉缸	最大使用壓力
Model	Plunger stroke	Slider stroke	Max. speed	Max. D.B. PULL	Weight	Matching cylinder	Max. pressure
	mm	mm	min <sup>-1</sup> (r.p.m.)	kN(kgf)	kg		MPa(kgf/cm <sup>2</sup> )
FA-610	18	10	1200	2.8 (280)	14.5	RS-6520N	1.0(10)
FA-812	21	12	800	4.4 (450)	28.5	RS-6530N	1.6(16)

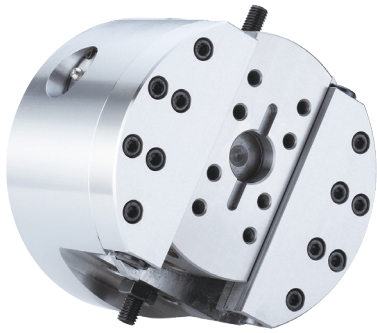
### 外型尺寸 DIMENSIONS

Model	A	B	C (H7)	D	E	F (H7)	G max.	G min.	H	J	K
FA-610	156	110	140	107	5	20	66	48	±5	20	M12x1.75
FA-812	198	130	170	127	5	25	84	63	±6	25	M16x2.0

Model	L	M	N	P	Q	Q1	R (H8)	S	T	U
FA-610	4-M10x90	12	2-M10x45	104.8	45	28	8	4-M10x16	40	40
FA-812	4-M12x105	12	2-M12x60	133.4	54	32	10	4-M10x16	50	50

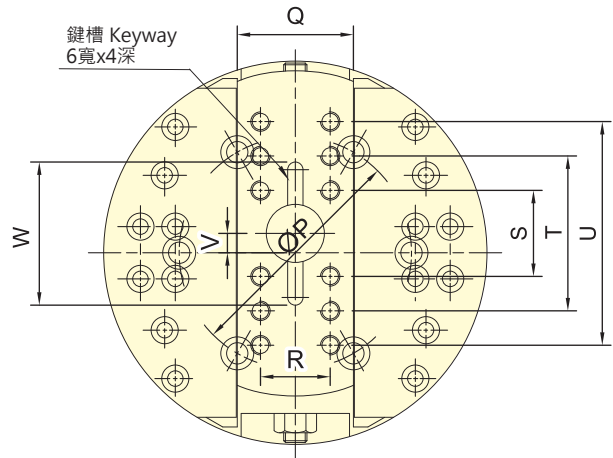
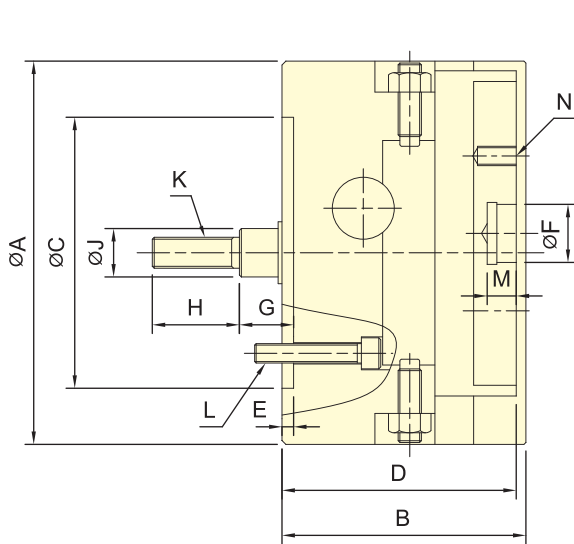
展刀搪溝頭



- 進給機構是以齒條與齒輪傳動方式為之，進給速度穩定，進給速度與行程的調整非常容易。
- 摺動面均經過硬化及精密研磨，剛性與耐久性非常良好。
- 定位精度:  $\pm 0.03\text{mm}$ ，需搭配定位螺栓。
- Feed mechanism is transmitted by Rack and Pinion with steady feed speed. Simple adjustment for feed speed and stroke.
- Matching surfaces of all parts hardened, grinding and lubricated directly. With rigidity and durability.
- Stopper accuracy:  $\pm 0.03\text{mm}$  , work with stoper screw.
- 與行控型迴轉油壓缸搭配使用。
- Suitable for using with RS type cylinder.

### 齒條與齒輪傳動 RACK AND PINION

FA-615 FA-830 FA-1570



保留規格修改的權利  
Subject to technical changes

#### 技術規格 SPECIFICATIONS

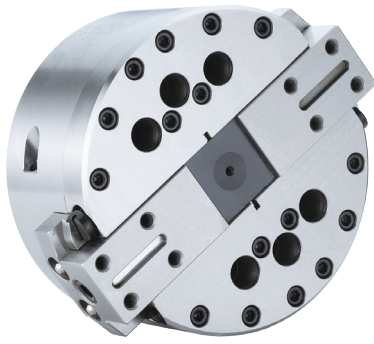
型號	楔心行程	滑座行程	最高迴轉數	容許最大入力	重量	適用迴轉缸	最大使用壓力
Model	Plunger stroke	Slider stroke	Max. speed	Max. D.B. PULL	Weight	Matching cylinder	Max. pressure
	mm	mm					MPa(kgf/cm <sup>2</sup> )
FA-615	15	15	1200	3.3 (340)	11.9	RS-6520N	1.2(12)
FA-830	30	30	800	5.0 (510)	23.9	RS-6530N	1.8(18)
FA-1570	70	70	500	18.2 (1855)	167	RS-1080N	2.6(26)

#### 外型尺寸 DIMENSIONS

Model	A	B	C (H7)	D	E	F (H7)	G max.	G min.	H	J	K
FA-615	150	107	110	102	5	25	43	28	35	20	M12x1.75
FA-830	198	126	140	121	6	30	55	25	45	25	M16x2
FA-1570	400	200	300	192	6	60	110	40	75	50	M30x3.5

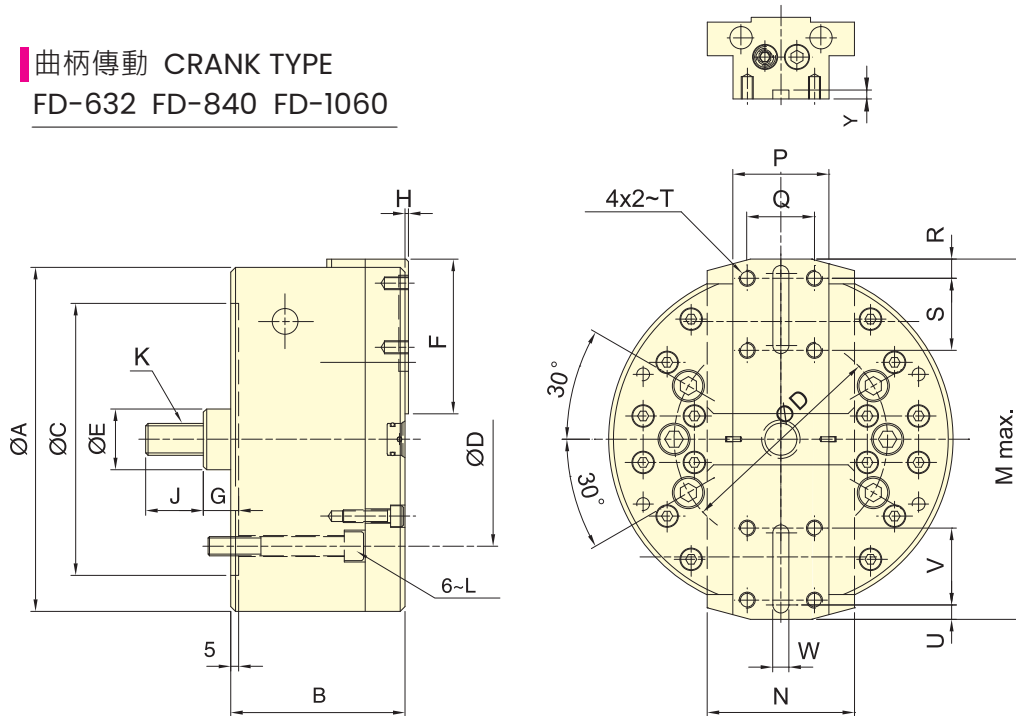
Model	L	M	N	P	Q	R	S	T	U	V	W
FA-615	3-M10x40	12	8-M8x16	82.6	50	32	32	68	-	$\pm 7.5$	56
FA-830	6-M10x55	15	12-M10x20	120	60	36	40	80	120	$\pm 15$	66
FA-1570	6-M20x90	15	8-M16x20	235	120	80	130	260	-	$\pm 17.5$	-



- 進給機構是以曲柄傳動方式為之，進給速度穩定，進給速度與行程的調整非常容易。
- 摺動面均經過硬化及精密研磨，剛性與耐久性非常良好。
- 定位精度：±0.03mm，需搭配定位螺栓。
- Feed mechanism is transmitted by Crank with steady feed speed. Simple adjustment for feed speed and stroke.
- Matching surfaces of all parts hardened, grinding and lubricated directly. With rigidity and durability.
- Stopper accuracy: ±0.03mm, work with stopper screw.
- 與行控型迴轉油壓缸搭配使用。
- Suitable for using with RS type cylinder.

### 曲柄傳動 CRANK TYPE

FD-632 FD-840 FD-1060



保留規格修改的權利  
Subject to technical changes

#### 技術規格 SPECIFICATIONS

型號 Model	楔心行程 Plunger stroke	滑座行程(直徑) Slider stroke(Dia.)	最高迴轉數 Max. speed	容許最大入力 Max. D.B. PULL	重量 Weight	適用迴轉缸 Matching cylinder	最大使用壓力 Max. pressure
	mm	mm	min <sup>-1</sup> (r.p.m.)	kN(kgf)	kg		MPa(kgf/cm <sup>2</sup> )
<b>FD-632</b>	20	32	3200	16.9 (1720)	13.6	RS-1030N	2.4(24)
<b>FD-840</b>	25	40	2500	20.6 (2100)	30.0	RS-1030N	3.0(30)
<b>FD-1060</b>	35	60	1800	20.6 (2100)	41.5	RS-1040N	3.0(30)

#### 外型尺寸 DIMENSIONS

Model	A	B	C(H7)	D	E	F	G max.	G Min.	H	J	K
<b>FD-632</b>	168	93	140	104.8	32	76	31	11	2	36	M16x2.0
<b>FD-840</b>	215	109	170	133.4	38	96.5	32.5	7.5	2	36	M20x2.5
<b>FD-1060</b>	254	123	220	171.4	38	110.5	32.5	-2.5	4	36	M20x2.5

Model	L	M	N	P	Q	R	S	T	U	V	W(H8)	Y
<b>FD-632</b>	6~M10x75	188	70	40	25	10	32	M8x15	10	32	6	4
<b>FD-840</b>	6~M12x85	238	92	60	42	12	45	M10x15	12	45	10	6
<b>FD-1060</b>	6~M16x125	286	90	65	46	15	50	M10x15	12	50	10	6